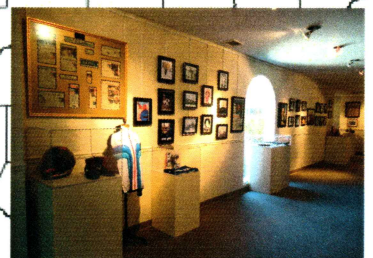
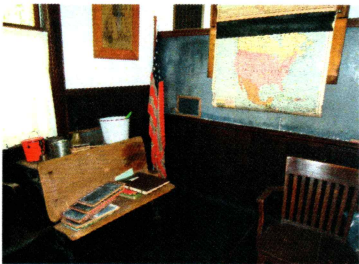


Kankakee County Museum Activity Book

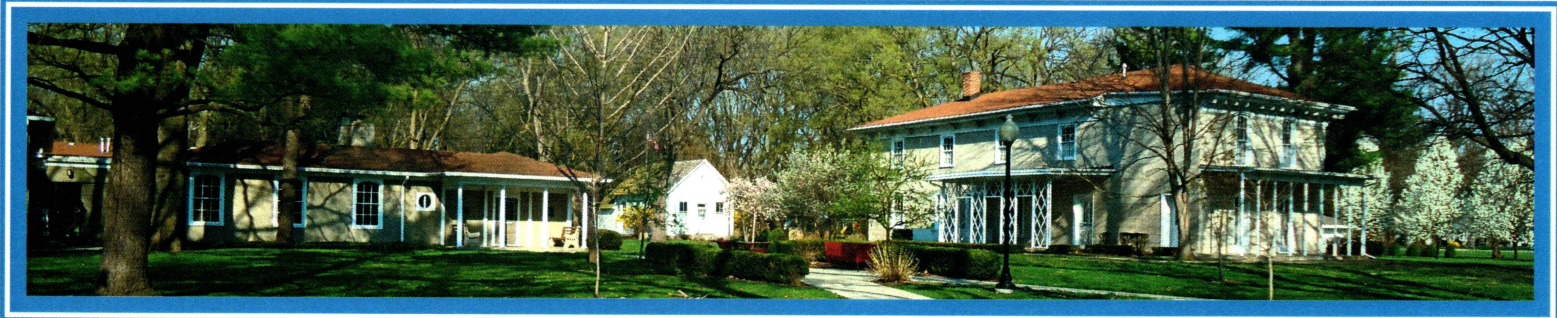
HOME OF THE
KANKAKEE COUNTY
HISTORICAL SOCIETY
Founded in 1906



801 S. 8TH AVE.
KANKAKEE, IL 60901
815-932-5279
WWW.KANKAKEECOUNTYMUSEUM.COM
TUE-FRI: 10AM-4PM
SAT: 1PM-4PM



FUNDED BY THE CHARLTON FAMILY CHARITABLE FOUNDATION



**FOUNTAIN IN THE COLUMN GARDEN
LOCATED AT
THE SMALL MEMORIAL MUSEUM CAMPUS**

Color the left half
of the Fountain
the way you
would like it to
look!



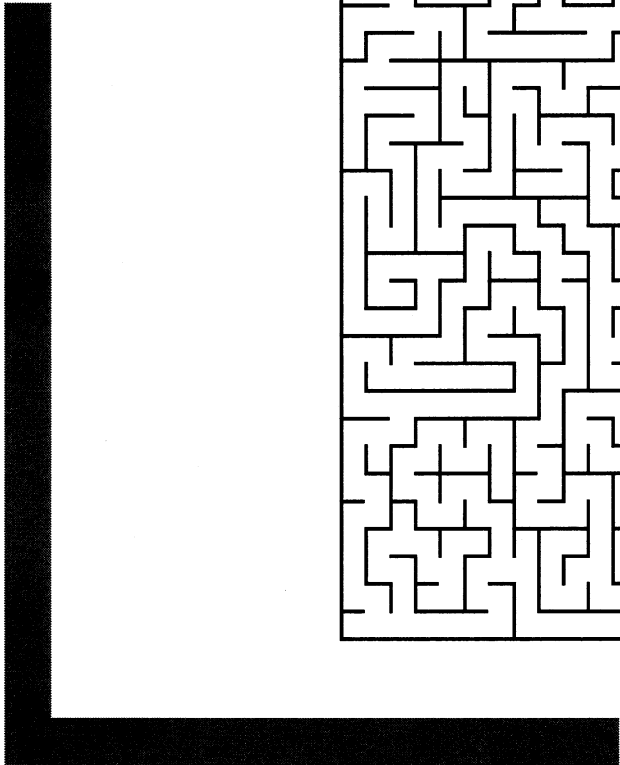
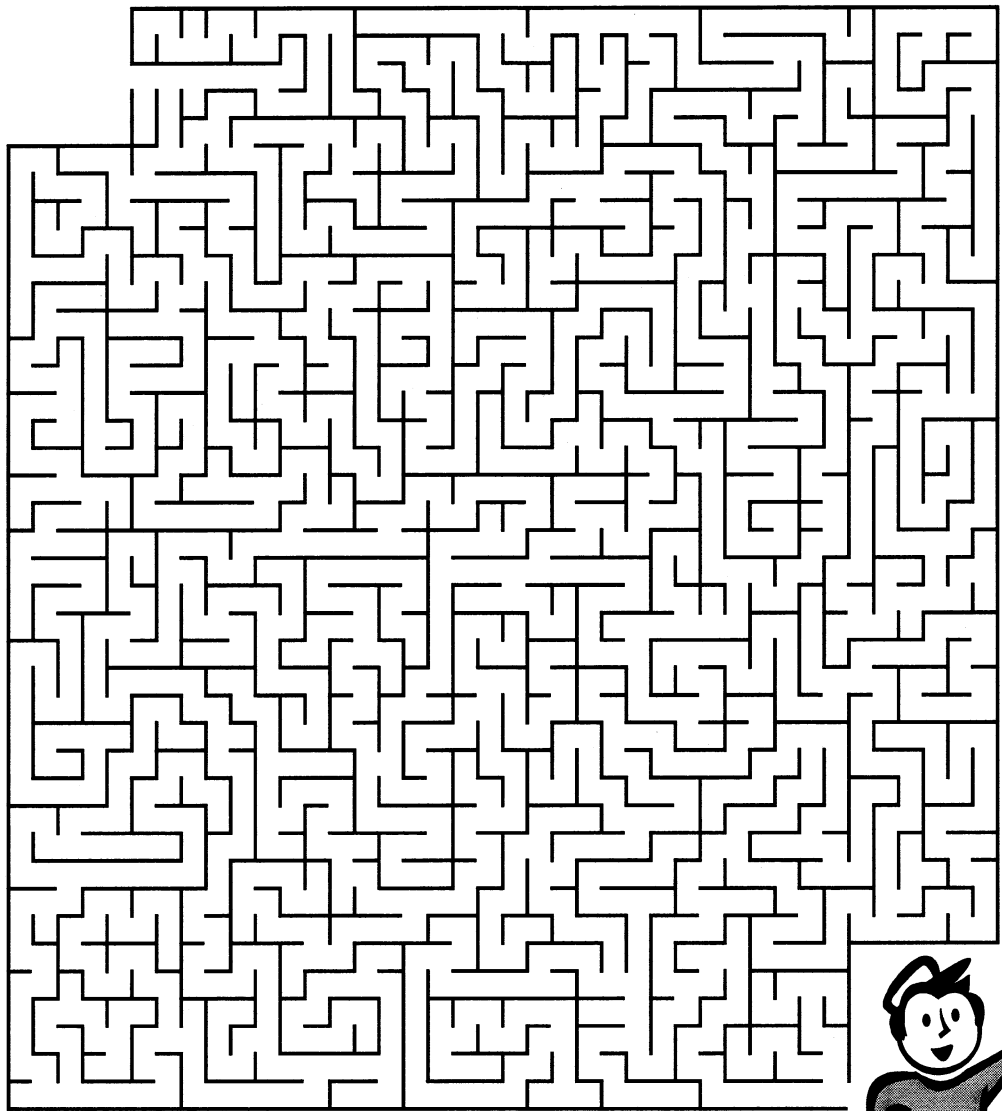
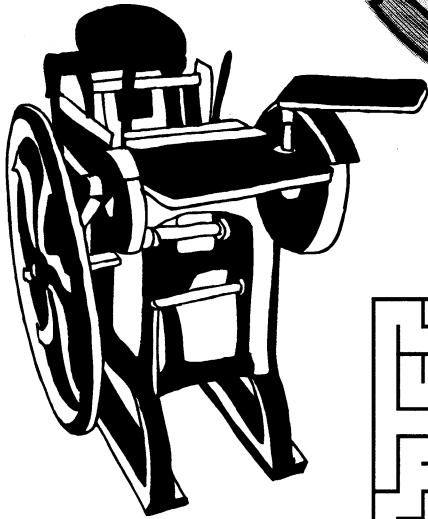
This Activity Book Belongs to:

Age: _____ **Date:** _____

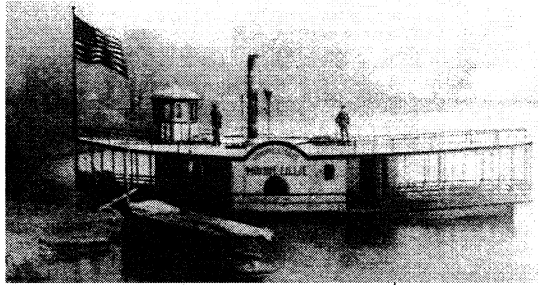
School: _____

PRINTING PRESS

FOLLOW THE PATH TO GET THE NEWSPAPER FROM
THE PRINTING PRESS TO THE PAPERBOY!



STEAM BOATS

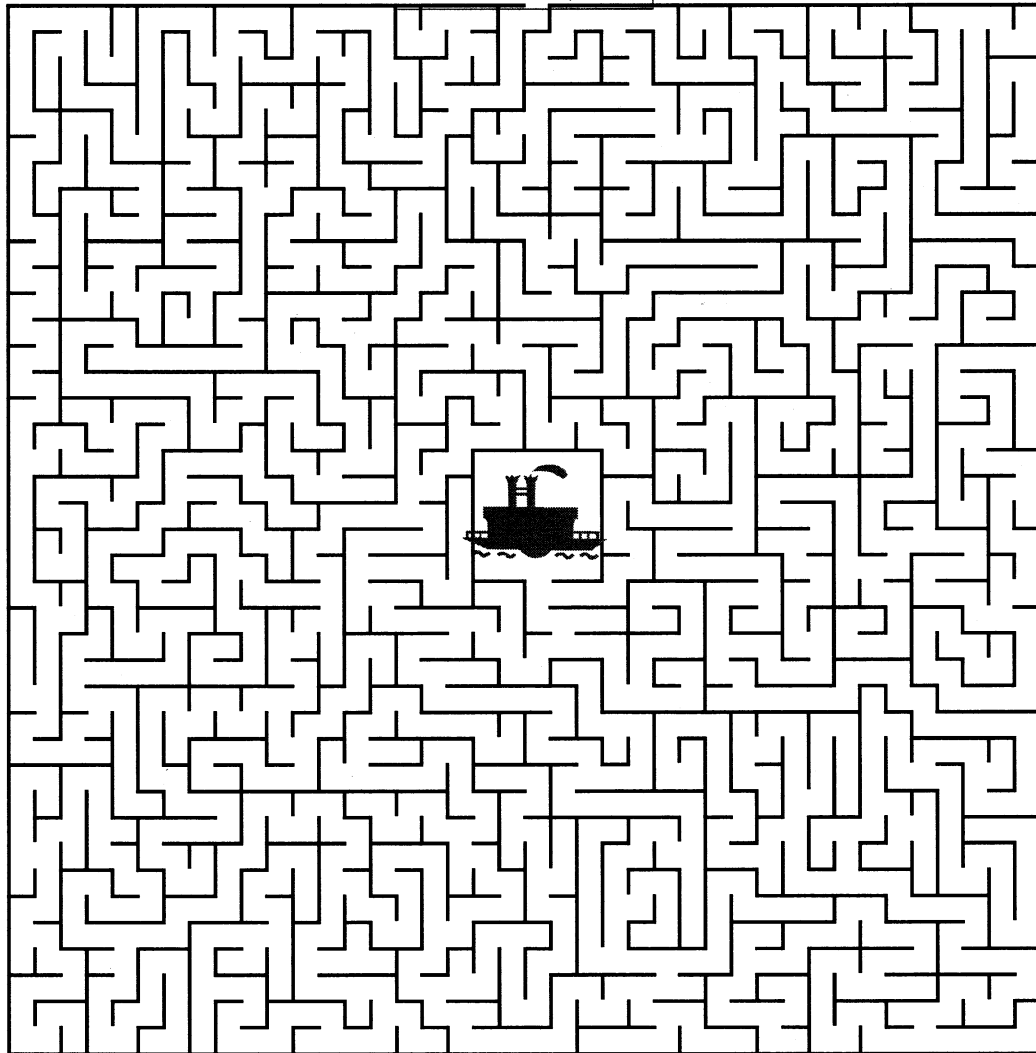


**CAPTAIN GOUGAR WOULD
TAKE VISITORS ON STEAM
BOAT RIDES UP & DOWN
THE KANKAKEE RIVER.**



**SHOW CAPTAIN
GOUGAR TO
HIS STEAM BOAT !**

Start Here!



PAST & PRESENT

TOWNS/CITIES OF KANKAKEE COUNTY

| | | | | | | | | | | | | | | | | | | | | | | | | |
|---|---|---|---|---|---|---|---|---|---|---|---|---|---|---|---|---|---|---|---|---|---|---|---|---|
| E | F | B | Y | R | A | R | K | A | K | C | A | M | E | L | S | F | Z | P | C | E | E | W | R | S |
| J | L | X | O | L | E | C | E | C | J | R | K | G | J | J | C | G | S | U | V | L | C | I | A | N |
| X | J | L | T | N | I | H | O | H | O | D | D | G | A | T | W | F | Z | D | F | L | N | C | M | H |
| K | H | O | I | D | F | R | C | M | Y | A | Y | T | R | R | N | A | B | E | G | I | E | H | L | A |
| W | R | C | D | V | B | I | A | S | M | B | K | R | A | P | T | N | A | R | G | V | M | E | E | U |
| F | H | E | I | B | N | P | E | L | R | L | U | M | Y | R | E | B | A | C | O | S | O | R | D | K |
| B | R | I | C | W | A | R | L | L | E | E | O | C | S | T | G | E | O | R | G | E | M | T | C | O |
| T | C | D | T | R | N | A | U | H | D | H | H | F | K | D | E | S | S | E | X | E | B | G | T | S |
| L | L | M | K | A | T | E | I | B | A | V | O | M | I | I | O | R | S | O | L | L | I | T | T | T |
| S | A | Q | B | B | K | G | E | L | R | Z | H | C | L | K | N | E | Z | V | Y | C | Z | V | S | E |
| I | R | E | R | O | H | E | K | R | V | E | K | J | R | E | C | G | C | X | E | W | R | G | U | R |
| A | K | C | A | M | N | O | R | F | G | E | H | A | C | R | S | A | H | C | I | R | D | O | O | G |
| N | E | E | D | J | A | E | R | W | Y | G | P | S | H | U | U | E | T | A | H | T | K | X | Y | O |
| N | C | E | L | Y | R | I | T | S | S | S | C | Z | E | Z | W | Y | D | R | M | G | D | L | S | M |
| O | I | K | E | H | E | E | N | N | A | T | S | B | U | N | I | O | N | H | I | L | L | E | E | E |
| B | T | A | Y | L | I | N | D | I | A | N | A | O | A | K | S | N | O | T | E | G | D | E | N | R |
| R | Y | K | I | M | Q | R | K | F | F | M | D | R | N | G | R | O | N | S | I | O | G | I | A | E |
| U | L | N | G | A | B | P | W | D | Y | J | J | Q | S | Y | C | A | R | T | I | L | L | P | B | K |
| O | G | A | P | X | O | T | G | I | I | I | A | K | E | K | U | W | J | I | A | X | F | G | C | U |
| B | L | K | B | H | W | D | B | E | N | R | L | E | X | N | D | V | F | G | E | B | R | A | Y | T |

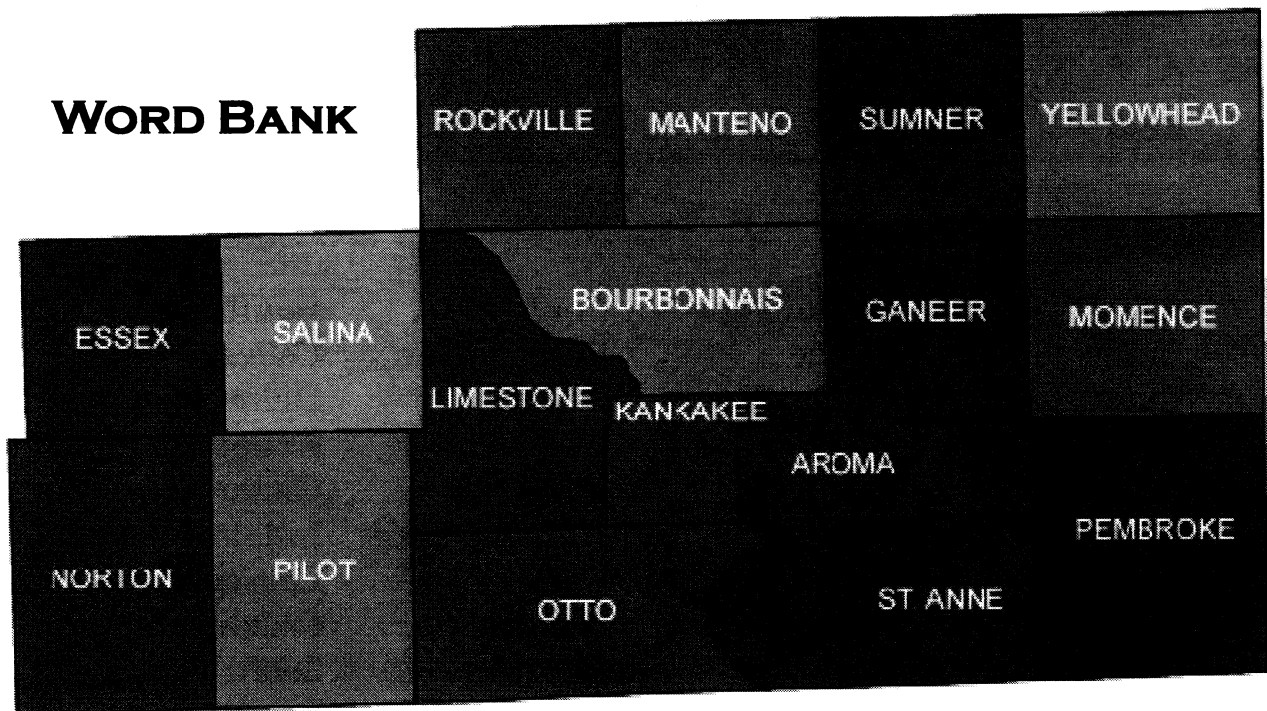
WORD BANK

- | | | | |
|-----------|-------------|---------------|--------------|
| Altorf | Aroma Park | Bonfield | Bourbonnais |
| Bradley | Brock | Buckingham | Cabery |
| Chebanse | Clarke City | DeSelm | Delmar |
| Dickeys | Edgeton | Essex | Exline |
| Frieling | Goodrich | Grant Park | Greenwich |
| Gronsi | Hercher | Hopkins Park | Indaina Oaks |
| Irwin | Kankakee | Koster | Leesville |
| Lehigh | Manteno | Momence | Oklahoma |
| Puder | Reddick | Sherburnville | Sollitt |
| St George | St Anne | Tallmadge | Tracy |
| Tuker | Union Hill | Verkler | Whitaker |
| Wichert | Yeager | | |

TOWNSHIPS OF KANKAKEE COUNTY

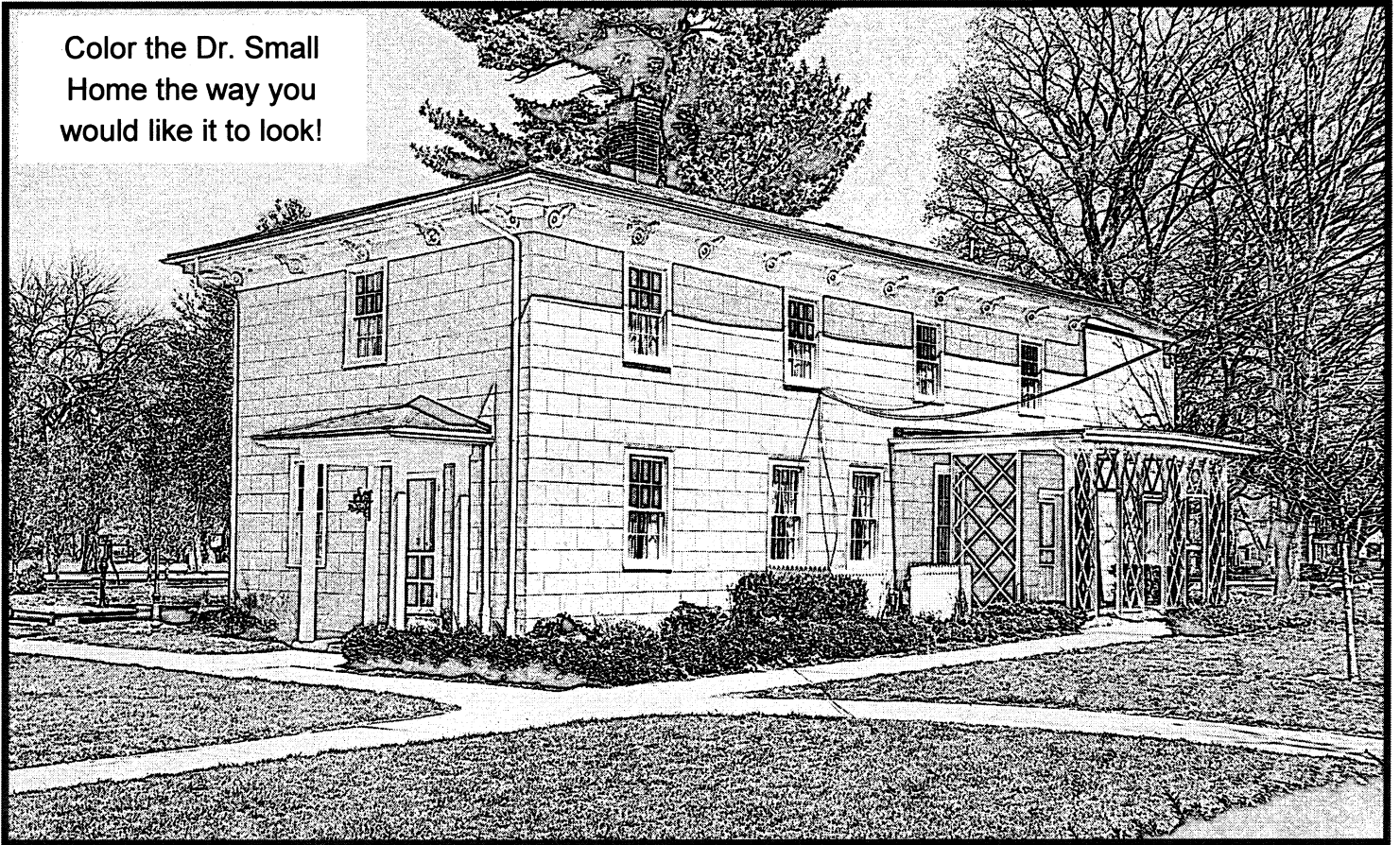
Q I D E Y E M A N T E N O L E G R D E G
G P J Y N E E B S O W V T I K A E Y S F
Q B I S I N L K I J A B T M O N N T Z Y
A N I L A S A L A M T N O E R E M F S K
X F O R O A K T O K O U W S B E U Z C N
Y V I S O T C R S W N M M T M R S S O N
I O M N V P A T R Q H A E O E T X R M K
B O U R B O N N A I S E K N P X T D D B
E L L I V K C O R N U U A E C O G S L N
G M T Y H N P V R T W C Q D N E S S E X

WORD BANK



THE DR. SMALL MEMORIAL HOME

Color the Dr. Small Home the way you would like it to look!



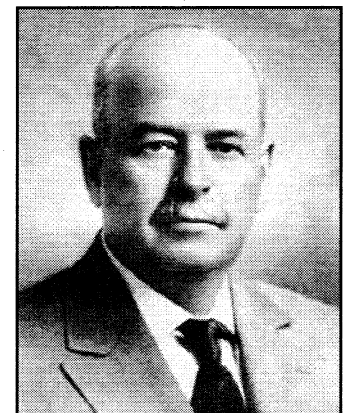
Dr. Abram Small was a physician at a time when few people went to school to become doctors.

Dr. Small and his wife Calista had six children. Their daughter, Susanne, studied art in France, with her landscapes showing influences from Monet.

Dr. Small also had a son, Lennington, who was Governor of Illinois from 1921-1929.



Monet's Water Lilies



Lennington Small

THE TAYLOR SCHOOL



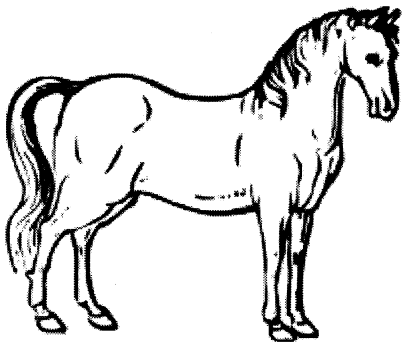
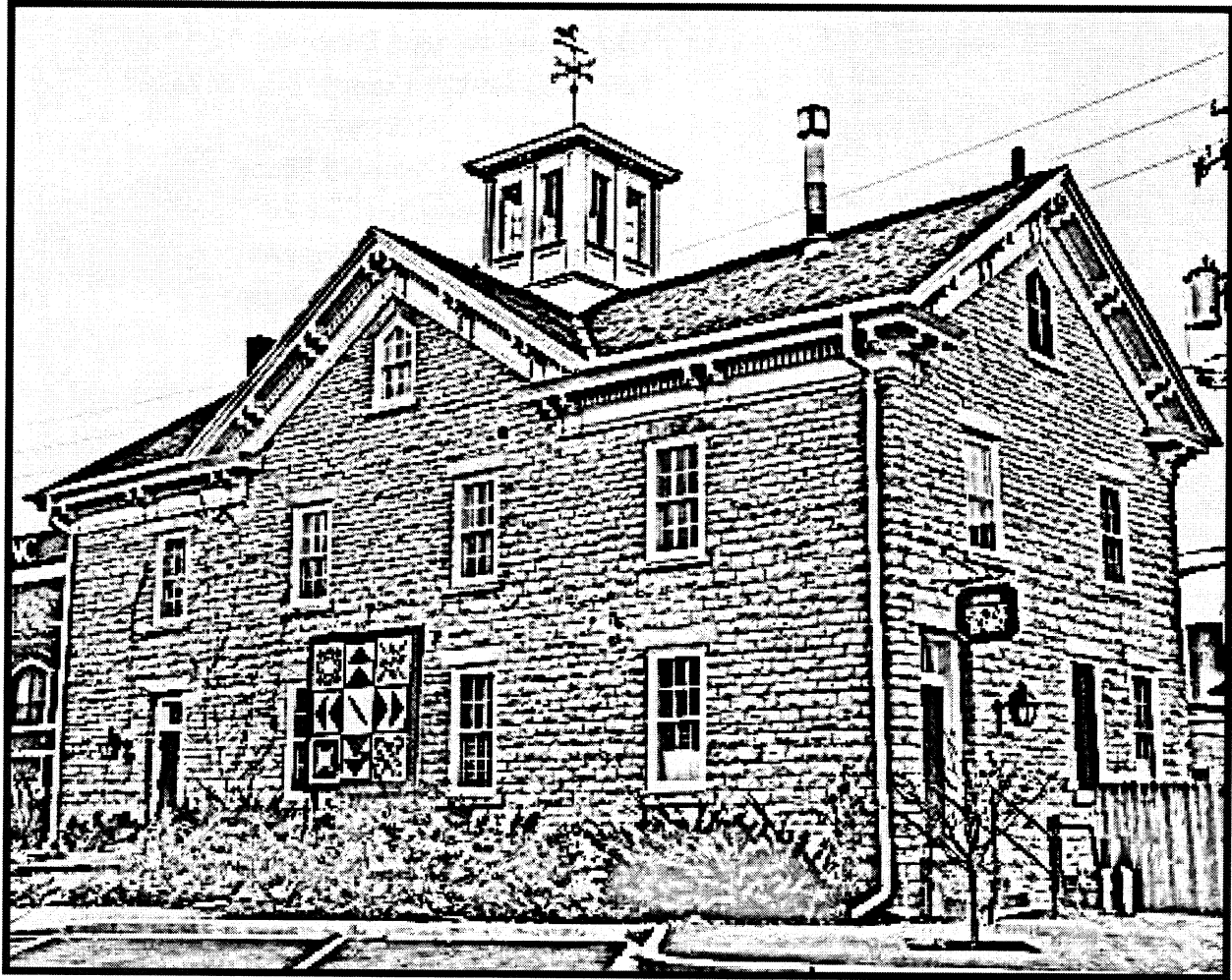
Color the Taylor School
the way you would
like it to look!



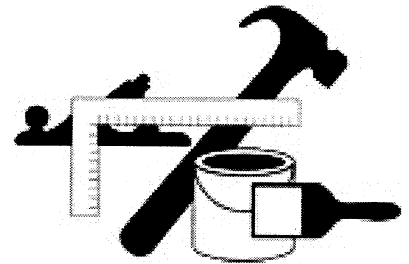
The Taylor School was built in 1904 and was originally located near DeSelm.



STONE BARN



The Stone Barn was built by Lemuel Milk to house his carriages. It is one of the oldest historical structures in Kankakee County. The Stone Barn has been used for many different businesses, such as a sign shop, hardware warehouse, and a bakery/restaurant. It has also been used to house fire department horses.



THREE GOVERNORS



Lennington Small

Born: June 16, 1862 **Died:** May 17, 1936
Life in Kankakee County: Born & Raised

Offices:

28th Governor of Illinois
Illinois State Senate
Illinois State Treasurer
Assistant U.S. Treasurer

Political Party: Republican

Spouse: Ida Morre

Children: Leslie, Budd & May

Profession: Farmer

Fun Fact: His great grandchildren own the Daily Journal newspaper

Samuel Harvey Shapiro

Born: April 25, 1907 **Died:** March 16, 1987

Moved to Kankakee County: Infancy

Offices:

38th Lieutenant Governor of Illinois
34th Governor of Illinois

Political Party: Democratic

Spouse: Evelyn

Children: Susan & Stephen

Profession: Attorney

Fun Fact: Born in the Governorate of Estonia in the Russian Empire



George Ryan

Born: February 24, 1934

Offices:

42nd Lieutenant Governor of Illinois
36th Illinois Secretary of State
39th Governor of Illinois

Political Party: Republican

Spouse: Lura Lynn Lowe

Children:

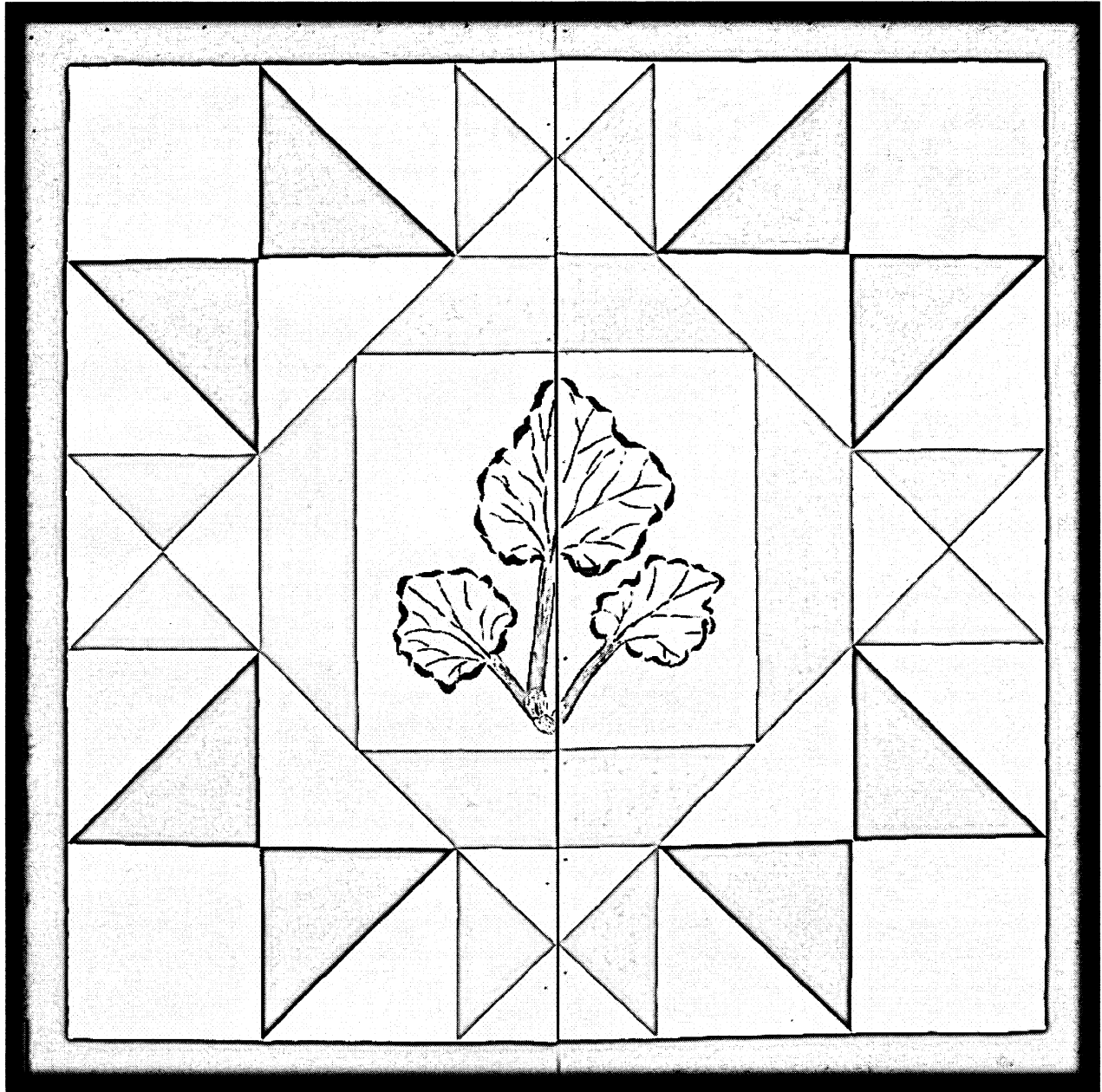
Nancy, Lynda, Julie, Joanne, Jeanette & George Jr.

Profession: Pharmacist

Fun Fact: Julie, Joanne & Jeanette are Triplets

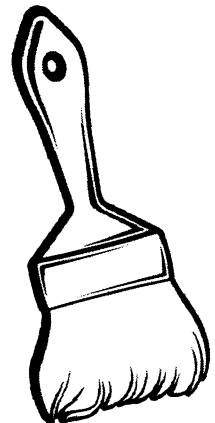


RHUBARB PIE BARN QUILT

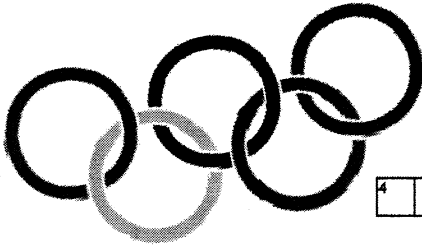


The Kankakee County Barn Quilts are created out of two sections of wood 4 feet by 8 feet, then they are put together. The wood is then painted twice and sealed twice to make sure it will last outside.

There are 42 barn quilts in Kankakee County.



FAMOUS PEOPLE FROM KANKAKEE COUNTY

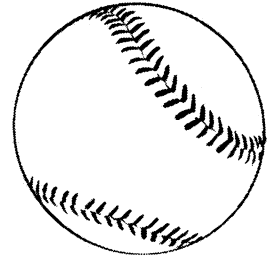
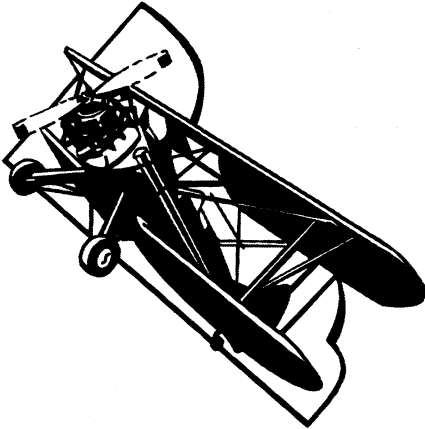


A crossword puzzle grid with 24 numbered starting points for clues. The grid consists of white squares for letters and black squares for empty space. The numbers are: 1 (top row, 1st square), 2 (top row, 2nd square), 3 (row 2, 1st square), 4 (row 3, 1st square), 5 (row 4, 1st square), 6 (row 5, 1st square), 7 (row 5, 2nd square), 8 (row 8, 1st square), 9 (row 9, 1st square), 10 (row 9, 10th square), 11 (row 10, 1st square), 12 (row 11, 1st square), 13 (row 12, 1st square), 14 (row 13, 1st square), 15 (row 14, 1st square), 16 (row 15, 1st square), 17 (row 15, 17th square), 18 (row 15, 18th square), 19 (row 16, 1st square), 20 (row 16, 1st square), 21 (row 17, 1st square), 22 (row 17, 1st square), 23 (row 17, 17th square), 24 (row 18, 1st square).



Across:

1. NFL Linebacker for Indianapolis Colts
3. Illinois Governor from 1999-2003
4. Retired NFL Running Back
5. Governor of Illinois 1921-1929
6. Retired MLB player, Manager of Bradenton Pirates
9. West Point Graduate & USA Olympic Bobsledder
12. 34th Governor of Illinois
14. Actor on Days of Our Lives
15. Aviator, First to fly over the English Channel with a passenger
18. Sculptor famous for interpretations of Abraham Lincoln
19. "Kankakee Kid" track runner, competed in 3 Olympics
20. Actress: CSI Miami, Two and a Half Men
22. Actor: My Three Sons, Double Indemnity
23. Retired MLB Pitcher
24. Football Running Back



Word Bank:

| | |
|---------------------|----------------------------|
| Lennington Small | Scott Meents |
| Samuel Shapiro | John Moisant |
| George Ryan | Ted Petersen |
| George Gray Barnard | Billy Petrick |
| Jordan Black | Tom Prince |
| Bryan Dattilo | Joie Ray |
| Kristin Dattilo | Jack Sikma |
| Thomas Draude | Jimmy Smith |
| Harold Gray | Lorenzo Smith |
| Tyjuan Hagler | Joseph Michael Straczynski |
| Merna Kennedy | Terry Wells |
| Frederick MacMurray | Butch Woolfolk |



Down:

2. Screen Writer: The Changeling, Babylon 5
7. Actress, The Circus with Charlie Chaplain
8. Retired NBA player, KCC Athletic Director
10. Cartoonist Known for Little Orphan Annie
11. Retired NBA Star
13. Brigadier General of US Marine Corps.
16. Comedy Writer- SNL & Comedy Central
17. Retired NBA Center
21. MLB Pitcher

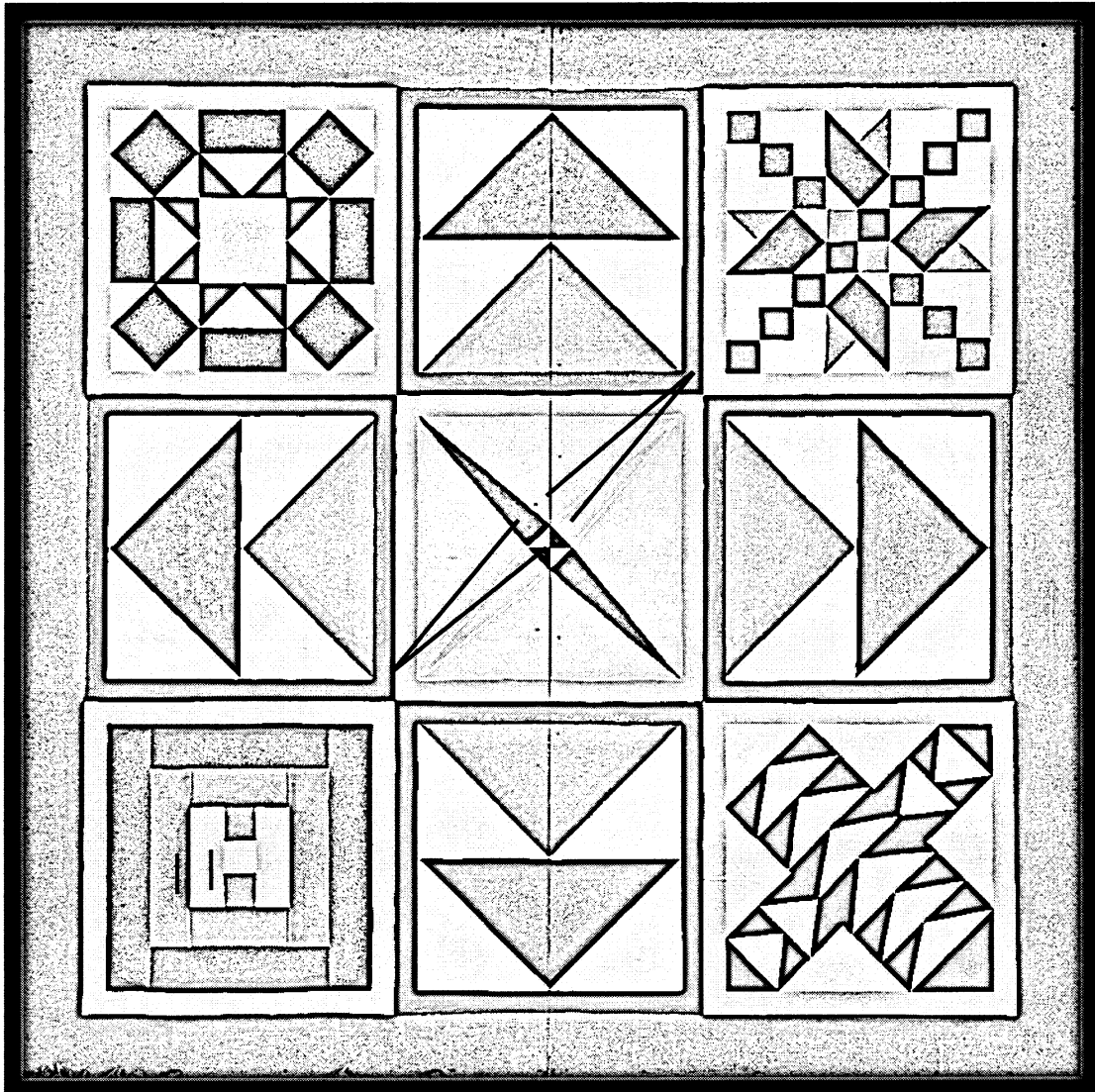
THE STONE BARN QUILT

Wagon Wheel

(Pioneer Settlers)

Arrowheads

(Native Americans)



Geese Flying
N
W—E
S

2 French
Canoes
(First
European
Settlers)

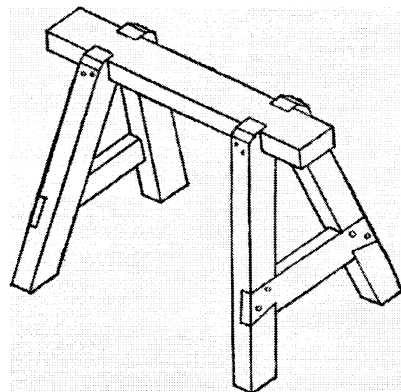
Court house Steps

(Historic Courthouse)

Railroads

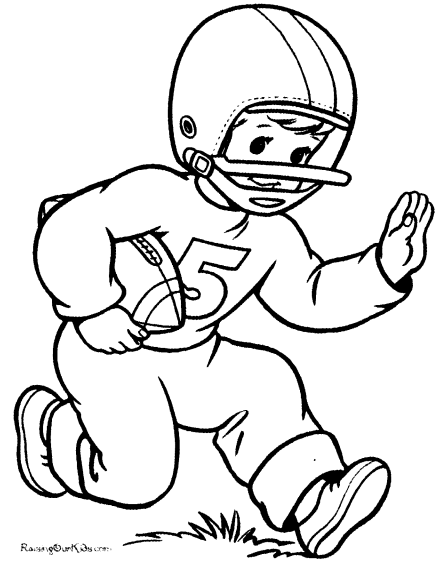
(Railroad Industry)

The Stone Barn Quilt has special meaning in each of the quilt squares.

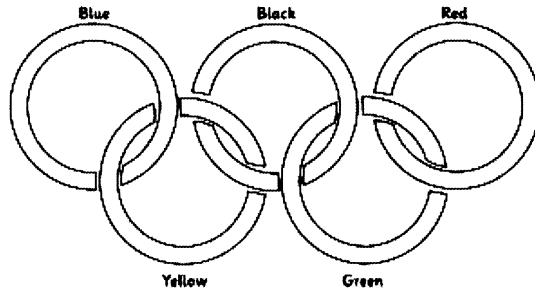




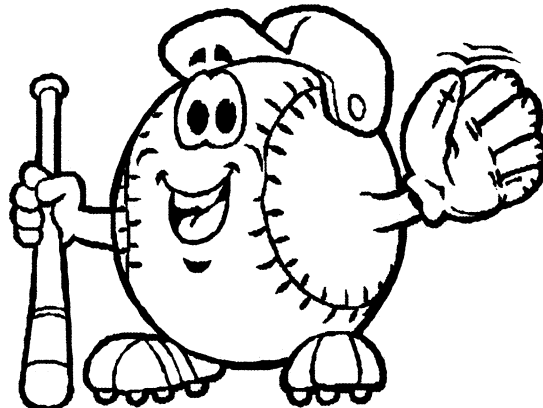
Kankakee County Sports



Olympic Rings



© 2007 crowsfoot.com



www.50states.com